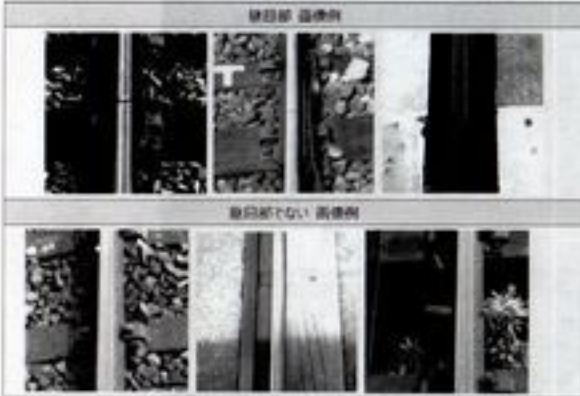







## 線路の連結部の点検：連結部の検出

**dataset**

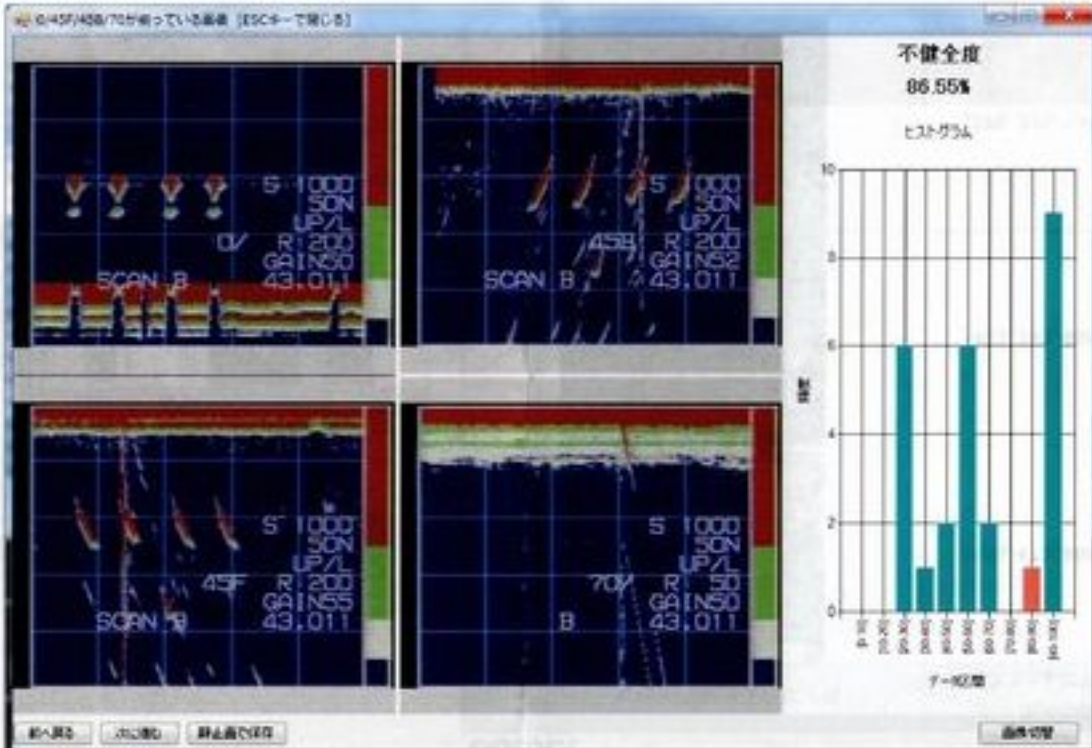


**output**

| 画像データに矩形座標を重畳表示した例   | 矩形座標<br>[左上 x,y,右下 x,y] |
|--|-------------------------|
|  | [430, 473, 686, 729]    |
|  | [403, 293, 659, 549]    |
|  | [278, 375, 534, 631]    |

検出した連結部を異常検出により正否判定しています。詳細は入社後に・・・

## レールの超音波探傷：クラス分類とスコア評価



The software interface displays four A-scan waveforms for different scan parameters: 45F, 45B, 45F, and 70V. Each waveform shows a peak corresponding to a rail joint. The histogram on the right shows the distribution of peak heights (dB) for these scans, with the highest peak at 70V (approx. 9 dB). The overall health status is indicated as 86.55%.

| 7-10 階 (dB) | Count |
|-------------|-------|
| 0-1         | 0     |
| 1-2         | 0     |
| 2-3         | 0     |
| 3-4         | 0     |
| 4-5         | 0     |
| 5-6         | 0     |
| 6-7         | 6     |
| 7-8         | 1     |
| 8-9         | 2     |
| 9-10        | 6     |
| 10-11       | 2     |
| 11-12       | 0     |
| 12-13       | 0     |
| 13-14       | 1     |
| 14-15       | 9     |

## 食品工場の衛生管理：物体検出とクラス分類

---

input

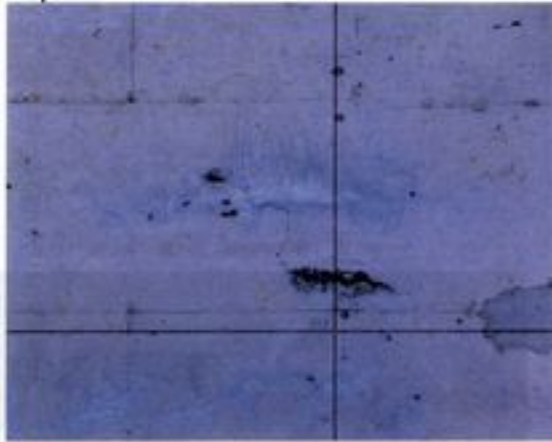


output

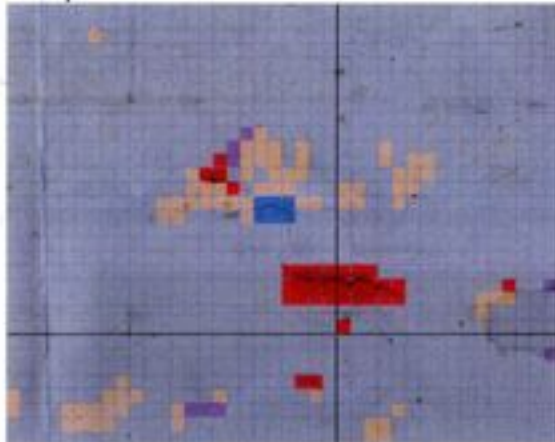


# 橋梁の点検：高精画像の小パッチごとのクラス分類

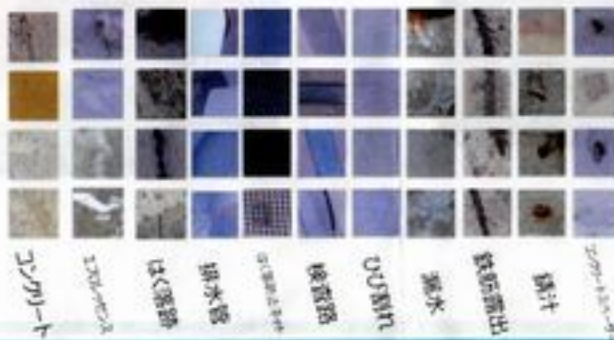
input



output



dataset



# 橋梁の点検：領域分割による異常箇所の検出



eflo rust leakwater subgru



eflo rust leakwater

14 /data/mgs/dgts/bridge\_compactCam\_20170512C/lev20170627F/walimage/P1000005.png